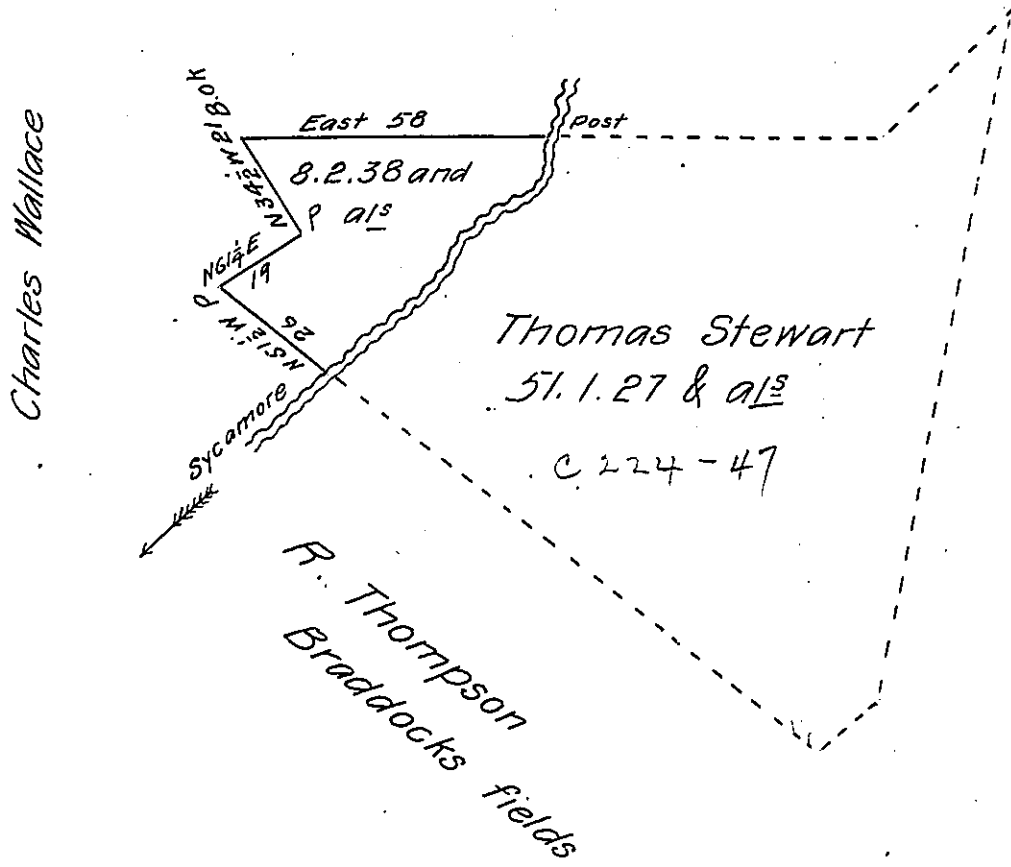


Soals or Zimmermon



at a post thence
 down the RUN
 S 20 W 12 P^s
 S 72 W 6 =
 S 49 W 7 =
 S 38 W 9 =
 S 43 W 15 =
 S 59 W 13 = to Sycamore

The above is a Draught of a tract of land said to have been surveyed Oct^r 14th 1787 by Benjamin Lodge Esq D.S. in pursuance of an application dated April 21st 1769 No 3142 unto Jacob Whitzel in Right of Peter Whitzel situated in Pitt (now Wilkins Township) then Westmoreland now Allegheny County. I have traced the lines of said Survey and return that part of it enclosed with black lines, and the small Run for Alex^r Scott and it contains eight acres two roods thirty eight perches and allowance for Roads &c.

R. Hilands D.S.

Gabriel Hiester Jr. Esq S.G.

IN TESTIMONY that the above is a copy of the original remaining on file in the Department of Internal Affairs of Pennsylvania, made conformably to an Act of Assembly approved the 16th day of February, 1833, I have hereunto set my Hand and caused the Seal of said Department to be affixed at Harrisburg, this sixteenth day of October 1905.

Lea C. P. ...
 Secretary of Internal Affairs.